



TIP THE
BALANCE
YOUR WAY

MAKE THE
MOVE TO
FOREX.COM

- Servicing traders since 1999
- Highly regulated across the globe
- Tight spreads and quality executions

FOREIGN EXCHANGE AND OTHER
LEVERAGED TRADING INVOLVES
SIGNIFICANT RISK OF LOSS

MAKE THE MOVE

[Broker Specs](#)

Platform Tech /

180

Subscribe

Reply to Thread

MT4 navigational tips and techniques



[hanover](#)

First Unread

Last Post



Post: Jan 29, 2008 4:52am | Edited Oct 1, 2013 12:43am - Added new sections in red t...

[hanover](#)

Quote

Cleanup

Post 1

MT4 navigational tips and techniques

(NEW MATERIAL IN **RED TYPEFACE**)

Hi all

The following post used to be a sticky in the MetaTrader forum, but it appears to have been lost. Hence I'm re-posting it here.

Use of the mouse and mousewheel, and their keyboard equivalents

Scrolling the chart

Hold down the left mouse button and drag the mouse in the main chart area, to scroll left/right.

Or you can also simply roll the mousewheel down/up, or use the left/right arrow keys, to likewise scroll the chart view left/right.

To scroll a whole screen at a time, use **Page Up** (scroll left) and **Page Down** (scroll right).

To reposition to the leftmost bar on the chart, press **Home**. To reposition to the most recent (rightmost) bar, press **End**.

To step forward one bar at a time, press **F12**.

To step backward one bar at a time, press **Shift-F12**.

Scrolling a chart *beyond the leftmost bar* will add historical bars to the beginning of the chart, until no more are available from MT4's historical database.

Moving directly to a certain date/time

To re-position immediately to a certain date, press **Enter**, then type in the date in the form DD.MM.YY and press Enter again. Leading zeros can be omitted (e.g. to move to 4 July 2005, type 4.7.5). To re-position to a certain date/time, use the format HH:MM or DD.MM.YY HH:MM (e.g. to position to 8:07am TODAY on a 1-min chart, simply type 8:7).

You can also use the "Fast Navigation Box" to change either the currency symbol, or the period, thus:

Inserted Code

1. time (hours:minutes)	example: 08:30; 8:30;
2. date	example: 2004.10.16; 16.10.2004; 16.10.04;
3. date and time	example: 2004.10.16 8:30; 16.10.2004 8:30; 16.10.04 8:30;
4. symbol	example: GBPUSD; EURUSD;
5. chart period	example: M1; M5; M15; M30; H1; H4; D1; W1; MN;
6. symbol, chart period	example: GBPUSD, M30; EURUSD, D1;

Vertical zoom and re-scale

You can re-scale the chart vertically by moving the mouse into the vertical axis area at the right of the screen, and then dragging downwards (with the left button held down) to compress the chart bars, or dragging upwards to expand them. Double click to reset the chart to its original scale.

Horizontal zoom and re-scale

Similarly, you can adjust the width of the price bars by moving the mouse into the horizontal axis area at the bottom of the screen, and then dragging right (zoom in) or left (zoom out). Or simply use the "+" and "-" keys to achieve this.

Indicators

Double-click on or near indicators with the left mouse button, to call their parameter setup windows.

Right-click to call the indicator's context menu.

If the screen is cluttered with overlapping indicators and/or objects, making it too difficult to select the desired indicator, press **Ctrl-I** to call up the Indicators dialog window. Double click (or click the Edit button, or **Alt-E**) on the indicator to edit its properties (parameters, colors, etc), or click the Delete button (or **Alt-D**) to remove it from the chart.

You can use the **Home**, **End** and **Page/arrow Up/Down** keys to navigate up/down the list.

Objects

Double-click on or near an object (line studies, texts, arrows, geometric shapes) to select the object. Once selected, you can move an object by left-clicking on it (or in the case of a trendline or shape, it's center handle) and dragging it to the desired

destination. Shapes, trendlines, channels etc may be extended by dragging the handles on the relevant edges. The number "X/Y" appears, where "X" = the width of the shape in candles, and "Y" = the height of the shape in pips. Right-click on a selected object to open its context menu.

Broker Specs

If the screen is cluttered with overlapping indicators and/or objects, making it too difficult to select the desired object(s), press **Ctrl-B** to call up the Objects dialog window. Left click the check boxes on/off to select/deselect relevant object(s). Double click (or click the Edit button, or **Alt-E**) on an object to edit its properties (parameters, colors, etc), or click the Delete button (or **Alt-D**) to remove it from the chart. To quickly delete a whole block of objects, repeatedly press **Alt-D** or hold it down (careful, they disappear rather quickly!)

You can use the **Home**, **End** and **Page/arrow Up/Down** keys to navigate up/down the list.

Click on the 'Name' or 'Description' heading area to sort by name, or description, respectively.

Left-click to select an item. You can use Ctrl-click to add individual items to a selection, Shift-click to add a group of consecutive items, or press **Ctrl-A** to select all items. Then click the Edit button (or press **Alt-E**) to edit all items in the group consecutively, or the Delete button (or press **Alt-D**) to delete all selected items simultaneously (careful!).

Alternatively, from the chart window, press **Backspace** repeatedly to delete the most recently added object(s) on a last-added-first-removed basis (useful if you want to quickly check out a Fibo or regression channel, then remove it). Then press **Ctrl-Z** to undo any accidental deletes, in reverse order.

Or press the **Delete** key to remove ALL SELECTED objects.

Parallel Trendlines

Ctrl + left click on a selected trend line to draw a parallel trend line (create a channel). Can also be used with vertical and horizontal lines.

Duplicating objects

The 'Parallel Trendlines' concept extends to **ALL** objects (vertical, horizontal and trend lines; shapes - triangle, square, ellipse; text and labels; arrows and symbols; and studies like channels, Fibo, Gann, Pitchfork, etc). Here's how to duplicate any object:

-- Select the object by clicking on it**

-- While holding down the **Ctrl** key: move the mouse over any one of the object's handles, and, holding down the left button drag the mouse to where you want the duplicated object to be located

This shortcut also duplicates all of the properties of the parent object, e.g. if you have red, green and blue objects, and you want to create a green one, simply duplicate it. This is quicker than creating a new object, and then changing its color to green.

** Object selection options

Press **Ctrl-O** and then select the 'Objects' tab.

-- "Select object by single mouse click" - if checked OFF, you must double click to select an object, and right click to modify its properties. If checked ON, single click to select an object, and double click to modify its properties.

-- "Select object after creation" - if checked ON, any object is automatically selected immediately after you create it.

-- "Show properties after creation" - if checked ON, the property modification window for the object is displayed, immediately after you create the object.

OR

Press **Ctrl-B** to display the objects list. Click on the checkbox (at left) for each object you want selected.

Information Bubble

Hover the mouse cursor on or over an element, object or indicator to see the prompt (help information bubble).

Crosshair mode, and ruler tool

Click the mousewheel to switch cursor to the "crosshair" mode.

This can also be achieved by pressing **Ctrl-F**, or selecting the crosshair icon from the toolbar. The crosshairs also display vertical (price) and horizontal (date/time) co-ordinates at the right and bottom of the chart.

Simply left-click to exit crosshair mode.

Now, here is something extremely useful that I haven't found in the on-line help:

While in crosshair mode, hold down the left mouse button and drag the mouse to obtain a ruler-type tool that measures vertical (number of pips) and horizontal (number of bars) from the center of the crosshairs. The tool displays counters in the form "A/B/C" where A is the number of bars right or left of the crosshair, B is the number of pips from crosshair to cursor, and C is the price at the cursor.

I find "B" extremely useful for measuring the number of pips between any two points, thus:

- 1) move the mouse to the point you want to measure from (the "anchor" point);
- 2) click the mousewheel to enter crosshair mode;
- 3) then hold down the left button and move the mouse to any number of destination points, to see the number of pips between the anchor point and the current mouse destination.

This saves having to calculate this distance manually, as the difference between two prices. Pretty cool!

You can also use this facility to count price bars (reading "A") between any two dates/times.

[Broker Specs](#)**Reference and anchor points**

'**Fixed chart position**' arrow: At the lower left of the chart there is a dark colored** arrow. Dragging it with the mouse sets the reference (anchor) point for the chart. Now when you zoom in or out, or even change the timeframe, this point remains anchored at its existing location.

'**Chart shift**' arrow: At the upper right of the chart there is likewise a dark colored** arrow. Drag it left or right with the mouse to set the location for the last (most current) bar on the chart (i.e. set the amount of empty "whitespace" at the right of the chart).

[** the color is actually set to the same color as the Grid color (press **F8** to change the Grid color in the chart Properties window). Hence if the arrows are difficult to see, change the Grid color to a color that contrasts better with the chart background.]

Removing all indicators and objects from your chart

Load a blank chart (the pair/timeframe doesn't matter), then change the settings (press **F8**) to set colors, grid, etc to suit your preference. Then save this as a template named (for example) **Z**. (menu option: Charts > Template > Save Template.....)

Then, whenever you want to instantly remove all indicators and objects from your chart, simply load template Z, by quickly using the hotkey combination: **Alt-C T Z**

The 'Grid' and 'Volumes' color selections (obtained by pressing **F8** to summon the chart Properties window) each serve dual purposes. The Grid color doubles both as the color for the chart grid (press **Ctrl-G** to toggle the grid on/off), but also the color for the horizontal Bid price line. Hence if you don't want the Bid price line cluttering your chart (e.g. it's easily confused as another S/R line), and you never use the grid facility, then set the Grid color to 'None', and the Bid price line disappears. I use the Bid/Ask line indicator that I've attached to this post, instead. You can of course turn the Ask line off either by setting the 'Ask line' color to 'None', or by unchecking 'Show Ask line' on the Common tab.

The 'Volume' color selection doubles both as the color for volume bars (press **Ctrl-L** to toggle these on/off) and also as the color for the order entry level lines. Hence if you don't want these lines cluttering your chart, and you don't use the Volume facility, then set the 'Volume' color to 'None', and the order entry level lines will disappear. Of course you can suppress the displaying of SL and TP level lines by changing the 'Stop Levels' color to 'None'.

List of hotkeys

There are many other useful hotkeys. Here is a comprehensive list:

Left arrow — scroll chart to the left;

Right arrow — scroll chart to the right;

Up arrow — quickly scroll chart to the left or (if the scale is defined), scroll chart upwards;

Down arrow — quickly scroll chart to the right or (if the scale is defined), scroll chart downwards;

Numpad 5 — restores chart vertical scale to its original default. If the scale was defined, this returns the chart back to its visible range;

Page Up — scroll a whole screen to the left;

Page Down — scroll a whole screen to the right;

Home — move the chart to the start point (first bar);

End — move the chart to the end point (last, i.e. most current) bar;

"-" — zoom out (there are 6 levels of zoom available);

"+" — zoom in;

Delete — delete all selected objects;

Backspace — delete most recently added objects, on a last-added-first-removed basis;

Enter — open/close the fast navigation window;

Esc — close any dialog window;

F1 — open the on line help "Userguide";

F2 — open the "History Center" window;

F3 — open the "Global Variables" window;

F4 — open MetaEditor;

F5 — switch to the next profile;

F6 — call the "Tester" dialog window for testing the expert attached to the chart window;

F7 — call the properties dialog window of the expert attached to their chart window, in order to change its settings;

F8 — call the chart setup dialog window, allowing basic chart parameters, colors, etc to be changed;

F9 — call the "New Order" window, allowing the entry of market, limit, stop orders;

F10 — open the "Popup prices" window;

F11 — enable/disable full screen mode;

F12 — scroll the chart one bar to the left;

Shift+F12 — scroll the chart one bar to the right;

[Broker Specs](#)

Alt+1 — display the chart as OHLC bars;
Alt+2 — display the chart as OHLC candlesticks;
Alt+3 — display the chart as a line (closing prices only);

Alt+A — copy all test/optimization results onto the clipboard;
Alt+W — call the chart management window;
Alt+F4 — exit the program;

Ctrl+A — arrange all indicator window heights by default;
Ctrl+B — call the "Objects List" dialog window;
Ctrl+C or **Ctrl+Insert** — copy to the clipboard;
Ctrl+D — open/close the "Data Window";
Ctrl+E — enable/disable the attached expert advisor;
Ctrl+F — switch to "Crosshair" mode;
Ctrl+G — show/hide the vertical/horizontal grid;
Ctrl+H — show/hide the OHLC line;
Ctrl+I — call the "Indicators List" dialog window;
Ctrl+L — show/hide volume data on the main chart;
Ctrl+M — open/close the "Market Watch" window;
Ctrl+N — open/close the "Navigator" window;
Ctrl+O — open the "Setup" window;
Ctrl+P — print the chart;
Ctrl+R — open/close the "Tester" window;
Ctrl+S — save the chart prices (OHLCV) in a file having extensions: "CSV", "PRN" or "HTM";
Ctrl+T — open/close the "Terminal" window;
Ctrl+W or **Ctrl+F4** — close the chart window that's currently in focus;
Ctrl+Y — show/hide date (period) separators;
Ctrl+Z or **Alt+Backspace** — undo object deletions in the reverse order they occurred;

Ctrl+F6 — switch to the next chart window;
Ctrl+F9 — open the "Terminal — Trade" window and switch the focus into it, allowing trading operations to be entered via the keyboard.

Attaching indicators to indicators outside of the main price chart

You can attach moving averages and other indicators to indicators on other than the main chart. For example, if you want to use a moving average to smooth RSI, do the following:

- 1) Create a lower window with RSI in the normal manner.
- 2) Open the navigator window (press **Ctrl-N**).
- 3) Click on the "Indicators" heading in the Navigator window, if necessary, to expand it.
- 4) Move the mouse to the "Moving Average" item, then (holding down the left button), drag it (a rectangle appears under the arrow cursor) into the RSI window.
- 5) In the ensuing dialog box, got to the "Apply to" drop down, and set this to "First indicator's data". This will cause the MA to be attached to the first indicator in this window, i.e. the RSI.
- 6) Adjust other parameters as desired, and press **Enter**.

NOTE:

- To create an indicator in a *separate window*, right-click on its name in the Navigator, and select "Attach to a chart".
- To create an indicator in the *same window* as another, drag it's name into the relevant window.

Adding custom-defined indicators to MT4

One of the most powerful MT4 features is that it has a comprehensive but friendly programming language that allows custom-defined indicators, scripts and expert advisors to be written. Here's how to import an already written indicator into MT4's charting facility:

- 1) Go to a web resource that has the source code for the indicator. A good one is <http://www.xeatrade.com/trading/11.html>. Note the "# A B C D E F G H I J K L M N O P Q R S T U V W X Y Z" index. So if you want to add (for example) the PPCI indicator to your charts, click on "P" to see all the custom-developed indicators starting with a "P". Left-click on the PPCI hyperlink. The source code for PPCI appears in the middle of the screen. Left-click inside this window, then press **Ctrl-A** to select all of the text, then **Ctrl-C** to copy it.
- 2) Return to MT4, and press **F4** to load the MetaEditor, a tool which allows to create and compile your own indicators, scripts and experts.
- 3) In MetaEditor, press **Ctrl-N** to create a new indicator using the Expert Advisor Wizard. Select the "Custom Indicator" radio button, and click Next. Type in the name (e.g. PPCI) that you want to use to reference your indicator in MT4, ignore the other fields, and click Next. On the final dialog window, ignore all fields, and click Finish.
- 4) Now left-click in the body of the screen, press **Ctrl-A** to select all the text, and then press **Ctrl-V** to paste the text you copied back in step 1, completely overwriting the previous text.

Broker Specs

Hopefully, the message "*0 error(s), 0 warning(s)*" will appear, indicating a "clean compile", i.e. that the programmer wrote the source code correctly, without syntax errors. Press **Esc** to close the dialog box.

Presto! If you now return to MT4, the new custom indicator should automatically appear both in the Navigator, and also under the menu option "Insert > Indicators > Custom" if you prefer to add it to your chart in this manner.

You can also add scripts and experts in the same way.

In step (1), select the "MQ4 Scripts" or "MQ4 Experts" hyperlink in the left menu.

In step (3), select the appropriate radio button.

Note that these objects are stored in the following folders:

Experts: `c:/program files/<mt4 broker name>/experts`

Scripts: `c:/program files/<mt4 broker name>/experts/scripts`

Custom indicators: `c:/program files/<mt4 broker name>/experts/indicators`

Include (program code, e.g. .MQH) files: `c:/program files/<mt4 broker name>/experts/include`

Templates: `c:/program files/<mt4 broker name>/templates`

Data files: `c:/program files/<mt4 broker name>/experts/files`

NOTE: As an alternative to the above, if you simply copy the .MQ4 file into the relevant folder, and then (exit and) re-start MT4, the expert, script or indicator will automatically be recompiled, and appear in the Navigator.

Some other good sources for MT4 indicators (apart from FF's search facility):

<http://www.forexfactory.com/showthread.php?t=62722> (see ZIP file attached to post #1)

<http://www.forex-tsd.com> (perform a forum search)

<http://codebase.mql4.com/> (perform a site search)

http://www.forexmt4.com/MT4_Indicators/

<http://www.desynced.net/fx/eas/indicators.php>

<http://www.greattradingystems.com/f...-4-indicators/>

<http://allforexindicators.com/Default.aspx>

<http://www.metatraderlibrary.com/forex-indicators/>

If you want to delete an expert, script or indicator (CAREFUL!), use Windows Explorer to go to the appropriate folder, and delete the relevant file with the EX4 extension. For example, if you decide that you no longer want to use PCCI, delete file PCCI.EX4

That will effectively remove PCCI from the custom indicators list in MT4

The file PCCI.MQ4 contains the source code for PCCI (which you copied from the web resource), the PCCI.EX4 file is the executable code that was created when you did your compile back in step (5). If you want to re-instate the indicator, all you need to do is reload the source into MetaEditor (press Ctrl-O and open the relevant file), and then press **F5** to compile it, which re-creates the executable file used by MT4.

A more simple way of deleting an expert, script or indicator is by using the Navigator (press Ctrl-N). Click on the item you wish to delete, press the DELETE key, and click Yes to confirm the deletion. Note that this deletes **both** the source (.MQ4) and executable (.EX4) files.

Happy charting!
David

Footnote: the above is repeated in the attached Word doc. If you prefer, you can download the doc, add your own notes to it, and/or print it out for handy reference.

NOTE: More tips [here](#).

March 27, 2012: Added attached document "How to create a ruler to measure multiple R-multiple profit targets". This is handy if you want a measuring tool where you want to vary a SL setting, and have multiple TP settings (that are R-multiples of the SL) adjust themselves automatically. It uses MT4's in-built Fibonacci Channels facility, so there's no third-party indy required.

Miscellaneous links

Solving Vista/Win7 problems: <http://4xtrader.net/how-to-run-metatrader-4-on-vista-or-7/>

7bit's Debug View thread: <http://www.forexfactory.com/showthread.php?t=245303>

Steve Hopwood's EA shell: <http://www.forexfactory.com/showthread.php?t=282290>

MQ4 tutorials: <http://www.forexfactory.com/showthread.php?t=6011>

see also: <http://www.forexfactory.com/showthread.php?t=54#post4485554>

MQ4 tutorials (full list of links):

<http://www.forexfactory.com/showthread.php?t=6011> (zip files with full tutorials)

<http://www.metatrader.info/node/34>

<http://articles.mql4.com/404>

<http://articles.mql4.com/417>

<http://articles.mql4.com/466>


<http://articles.mql4.com/516>

Broker Specs<http://articles.mql4.com/536><http://book.mql4.com/><http://docs.mql4.com/> (MQL4 reference manual)<http://www.forexfactory.com/showpost.php?p=2160415>Check out Jim Dandy's **excellent** MQL4 tutorial videos here: <http://www.jimdandyforex.com/lessonvideo-links/>Br0ker comparison links: <http://www.forexfactory.com/showthread.php?t=282549>TA resources: <http://www.forexfactory.com/showthread.php?t=106577>Useful MQL4 functions (my functions library): <http://www.forexfactory.com/showthread.php?t=165557>Format of HST files here: <http://www.forexfactory.com/showthread.php?p=1477708>Export price history to Excel here: <http://www.forexfactory.com/showthread.php?p=1479389> (see later posts in thread also)and updated here: <http://www.forexfactory.com/showpost.php?p=1935637>Export History indicator: <http://www.forexfactory.com/showthread.php?p=2831344>Export bid/ask to Excel (SMJones, DDE-sample.xls): <http://www.forexfactory.com/showthread.php?p=1815623>MT4 Expert Advisor Builder: <http://sufx.core.t3-ism.net/ExpertAdvisorBuilder/>Another strategy builder: <http://forexsb.com/wiki/start>MQL4: Manual: <http://book.mql4.com/>Documentation: <http://docs.mql4.com/>Interpreting System Tester Report numbers: http://www.metaquotes.net/experts/ar...tester_report/Link to MQL4 resources: <http://www.forexfactory.com/showpost.php?p=2160415>Trade/exit management EAs: <http://www.forexfactory.com/showthread.php?t=89371> and <http://www.forexfactory.com/showthread.php?t=9553>Compendium of EAs (mainly trade management) in forexsaint's thread: <http://www.forexfactory.com/showthread.php?t=193727>Why MT4 is so widely used: <http://www.forexfactory.com/showthread.php?p=2785588>What the numbers in MT4's Expert Testing report mean: <http://articles.mql4.com/83> and <http://articles.mql4.com/127>Using MT4 to plot non-forex charts: <http://www.forexfactory.com/showthread.php?t=208577>and <http://www.forexfactory.com/showthread.php?t=20535>Reading/writing files outside ...\\experts\\files folder: <http://articles.mql4.com/720> and <http://codebase.mql4.com/4086>Executing external program: <http://forum.mql4.com/16121#109022> and <http://support.microsoft.com/kb/238245>How to set up e-mail alerts in MT4: <http://broguetraders.com/2011/02/11/...in-metatrader/>also <http://www.forexfactory.com/showthread.php?t=23638>and <http://www.forexfactory.com/showthread.php?t=273034>MetaTrader 4 Strategy Tester Tutorial: <http://www.easyexpertforex.com/backt...imization.html>How to attain 90% modelling quality: <http://alansforexblog.com/2008/02/27...pert-advisors/>Free data source for EAs: <http://www.forextester.com/datasources.html>EA review/construction info: <http://eareview.net/tick-data>Trade juice table on statistical validity: <http://www.tradejuice.com/system-tra...ing-system.htm>Ideas on backtesting: <http://www.forexfactory.com/showthread.php?p=6160037>

Possible sources of tick data:

<http://ratedata.gaincapital.com/><http://www.forextickdata.com/services.htm><http://www.tickplusdata.com/forexlist.htm><http://disktrading.is99.com/disktrading/#FOREX>OMZ to ASCII converter here: <http://www.quote-solutions.com/softw...historycentre/><http://www.tssupport.com/services/hc/><http://www.goforex.net/forex-directory/forex-data.htm><http://www.global-view.com/forex-tra...forex-history/><http://www.thinkingstuff.com/Resourc...5/Default.aspx>MT4 script to convert tick data to FXT/HST format: <http://codebase.mql4.com/516>

Free programming threads:

<http://www.forexfactory.com/showthread.php?t=168808><http://www.forexfactory.com/showthread.php?t=166758><http://www.forexfactory.com/showthread.php?t=212422><http://www.forexfactory.com/showthread.php?t=197798>How to read/interpret the stats on a Trade Explorer: <http://www.forexfactory.com/showthread.php?t=410405>Pips, lots, spread, swap, risk, position sizing, margin, leverage calculations explained: <http://www.forexfactory.com/showthread.php?p=2285285>**Attached Files** [MT4 navigational tips and techniques.doc](#) 112 KB | 8,355 downloads | Uploaded Jul 17, 2009 4:04pm [How to create a ruler to measure multiple R-multiple profit targets.doc](#) 35 KB | 3,011 downloads | Uploaded Mar 26, 2012 5:59pm [Bid Ask Line.mq4](#) 2 KB | 1,813 download | Uploaded May 11, 2012 5:11pm

Excellent post David 😊

Mar 2, 2008 7:02pm

[Quote](#)

[Cleanup](#)

[Post 3](#)

Hi all,

In reference to Crosshair mode, and ruler tool #3:

While the left button is held down and the mouse moved. The first number is the difference of bars from the initial left mouse click, the second number is the difference in pips from the initial left mouse click and the third number is the exchange rate of the present mouse pointer position (in the case of an arrow the tip of the arrow).

Regards,
lucidlamp

Mar 2, 2008 7:56pm

[Quote](#)

[Cleanup](#)

[Post 4](#)

Thanks for posting!

Mar 2, 2008 8:31pm

[Quote](#)

[Cleanup](#)

[Post 5](#)

Thank you Hanover ... using them already. 🙏

Mar 6, 2008 12:35pm

[Quote](#)

[Cleanup](#)

[Post 6](#)

Been a long time since I used this program. I have an EX\$ file that I want the indicator, but I do not have the MQ4 file. How do I get this?

Jun 4, 2008 3:16pm

[Quote](#)

[Cleanup](#)

[Post 7](#)

[Quoting scottyb159](#)

Been a long time since I used this program. I have an EX\$ file that I want the indicator, but I do not have the MQ4 file. How do I get this?

ScottyB159, sorry I only just noticed your post now; don't know if you're still around. Anyway, I'm afraid I can't help you. What you're asking is how to decompile an executable back to its source code. I don't believe that this can be done. For starters, the symbol (e.g. variable, array) names in the source code are generally not stored in an executable, hence an exact reproduction of the original source is impossible.

David

Sep 13, 2008 3:23pm | Edited at 6:55pm - added attachment

[Quote](#)

[Cleanup](#)

[Post 8](#)

When changing the color parameters on an indicator or line study, instead of choosing one of the 132 preselected colors, you can either click the Custom button, or simply type in **R,G,B** where R = the red component, G = the green component, B = the blue component. Each of these may have a value between 0 and 255 inclusive. This gives you access to the full color palette.

To make an indicator invisible, select 'None'.

Note to programmers: the following table gives the R,G,B components of the 132 preselected colors (sorted alphabetically):

Inserted Code

[b][u]	#	MT4#	MT4 color token	Hex (RGB)	MT4 constant	R	G	B [/ u] [/ b]
11	128	AliceBlue		F0 F8 FF	0xF0F8FF	240	248	255
12	115	AntiqueWhite		FA EB D7	0xFAEBD7	250	235	215
7	48	Aqua		00 FF FF	0x00FFFF	0	255	255
13	92	Aquamarine		7F FF D4	0x7FFFD4	127	255	212
14	114	Beige		F5 F5 DC	0xF5F5DC	245	245	220
15	110	Bisque		FF E4 C4	0xFFE4C4	255	228	196

Broker Specs

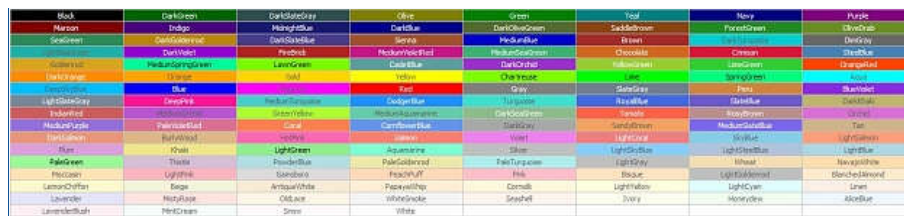
17	112	BlanchedAlmond	FF EB CD	0xFFEBCD	255	235	205
18	50	Blue	00 00 FF	0x0000FF	0	0	255
19	56	BlueViolet	8A 2B E2	0x8A2BE2	138	43	226
20	22	Brown	A5 2A 2A	0xA52A2A	165	42	42
21	82	BurlyWood	DE B8 87	0xDEB887	222	184	135
22	36	CadetBlue	5F 9E A0	0x5F9EA0	95	158	160
23	45	Chartreuse	7F FF 00	0x7FFF00	127	255	0
24	30	Chocolate	D2 69 1E	0xD2691E	210	105	30
25	75	Coral	FF 7F 50	0xFF7F50	255	127	80
26	76	CornflowerBlue	64 95 ED	0x6495ED	100	149	237
27	117	Cornsilk	FF F8 DC	0xFFFF8DC	255	248	220
28	31	Crimson	DC 14 3C	0xDC143C	220	20	60
29	12	DarkBlue	00 00 8B	0x00008B	0	0	139
30	18	DarkGoldenrod	B8 86 0B	0xB8860B	184	134	11
31	77	DarkGray	A9 A9 A9	0xA9A9A9	169	169	169
32	2	DarkGreen	00 64 00	0x006400	0	100	0
33	64	DarkKhaki	BD B7 6B	0xBDB76B	189	183	107
34	13	DarkOliveGreen	55 6B 2F	0x556B2F	85	107	47
35	41	DarkOrange	FF 8C 00	0xFF8C00	255	140	0
36	37	DarkOrchid	99 32 CC	0x9932CC	153	50	204
37	81	DarkSalmon	E9 96 7A	0xE9967A	233	150	122
38	69	DarkSeaGreen	8F BC 8B	0x8FBC8B	143	188	139
39	19	DarkSlateBlue	48 3D 8B	0x483D8B	72	61	139
40	3	DarkSlateGray	2F 4F 4F	0x2F4F4F	47	79	79
41	23	DarkTurquoise	00 CE D1	0x00CED1	0	206	209
42	26	DarkViolet	94 00 D3	0x9400D3	148	0	211
43	58	DeepPink	FF 14 93	0xFF1493	255	20	147
44	49	DeepSkyBlue	00 BF FF	0x00BFFF	0	191	255
45	24	DimGray	69 69 69	0x696969	105	105	105
5	60	DodgerBlue	1E 90 FF	0x1E90FF	30	144	255
46	27	FireBrick	B2 22 22	0xB22222	178	34	34
47	15	ForestGreen	22 8B 22	0x228B22	34	139	34
48	107	Gainsboro	DC DC DC	0xDCDCDC	220	220	220
49	43	Gold	FF D7 00	0xFFD700	255	215	0
8	33	Goldenrod	DA A5 20	0xDAA520	218	165	32
50	53	Gray	80 80 80	0x808080	128	128	128
51	5	Green	00 80 00	0x008000	0	128	0
52	67	GreenYellow	AD FF 2F	0xADFF2F	173	255	47
53	127	Honeydew	F0 FF F0	0xF0FFF0	240	255	240
54	83	HotPink	FF 69 B4	0xFF69B4	255	105	180
55	65	IndianRed	CD 5C 5C	0xCD5C5C	205	92	92
56	10	Indigo	4B 00 82	0x4B0082	75	0	130
57	126	Ivory	FF FF F0	0xFFFFF0	255	255	240
58	90	Khaki	F0 E6 8C	0xF0E68C	240	230	140
59	121	Lavender	E6 E6 FA	0xE6E6FA	230	230	250
60	129	LavenderBlush	FF F0 F5	0xFFFFF0F5	255	240	245
61	35	LawnGreen	7C FC 00	0x7CFC00	124	252	0
62	113	LemonChiffon	FF FA CD	0xFFFFACD	255	250	205
63	96	LightBlue	AD D8 E6	0xADD8E6	173	216	230
64	86	LightCoral	F0 80 80	0xF08080	240	128	128
65	119	LightCyan	E0 FF FF	0xE0FFFF	224	255	255
66	111	LightGoldenrod	FA FA D2	0xFAFAD2	250	250	210
67	102	LightGray	D3 D3 D3	0xD3D3D3	211	211	211
68	91	LightGreen	90 EE 90	0x90EE90	144	238	144
69	106	LightPink	FF B6 C1	0xFFB6C1	255	182	193
70	88	LightSalmon	FF A0 7A	0xFFA07A	255	160	122
71	25	LightSeaGreen	20 B2 AA	0x20B2AA	32	178	170
72	94	LightSkyBlue	87 CE FA	0x87CEFA	135	206	250
73	57	LightSlateGray	77 88 99	0x778899	119	136	153
74	95	LightSteelBlue	B0 C4 DE	0xB0C4DE	176	196	222
75	118	LightYellow	FF FF E0	0xFFFFE0	255	255	224
76	46	Lime	00 FF 00	0x00FF00	0	255	0
4	39	LimeGreen	32 CD 32	0x32CD32	50	205	50
77	120	Linen	FA F0 E6	0xFAF0E6	250	240	230
6	51	Magenta	FF 00 FF	0xFF00FF	255	0	255
78	9	Maroon	80 00 00	0x800000	128	0	0
79	68	MediumAquaMarine	66 CD AA	0x66CDAA	102	205	170
80	21	MediumBlue	00 00 CD	0x0000CD	0	0	205
81	66	MediumOrchid	BA 55 D3	0xBA55D3	186	85	211
82	73	MediumPurple	93 70 DB	0x9370DB	147	112	219
83	29	MediumSeaGreen	3C B3 71	0x3CB371	60	179	113
84	79	MediumSlateBlue	7B 68 EE	0x7B68EE	123	104	238
85	34	MediumSpringGreen	00 FA 9A	0x00FA9A	0	250	154
86	59	MediumTurquoise	48 D1 CC	0x48D1CC	72	209	204
87	28	MediumVioletRed	C7 15 85	0xC71585	199	21	133
88	11	MidnightBlue	19 19 70	0x191970	25	25	112

[Broker Specs](#)

90	122	MistyRose	FF E4 E1	0xFFE4E1	255	228	225
91	105	Moccasin	FF E4 B5	0xFFE4B5	255	228	181
92	104	NavajoWhite	FF DE AD	0xFFDEAD	255	222	173
93	7	Navy	00 00 80	0x000080	0	0	128
133	133	None	00 00 00	C'0x00,0x00,0x00'	0	0	0
94	123	OldLace	FD F5 E6	0xFDF5E6	253	245	230
95	4	Olive	80 80 00	0x808000	128	128	0
96	16	OliveDrab	6B 8E 23	0x6B8E23	107	142	35
2	42	Orange	FF A5 00	0xFFA500	255	165	0
97	40	OrangeRed	FF 45 00	0xFF4500	255	69	0
98	72	Orchid	DA 70 D6	0xDA70D6	218	112	214
99	100	PaleGoldenrod	EE E8 AA	0xEEE8AA	238	232	170
100	97	PaleGreen	98 FB 98	0x98FB98	152	251	152
101	101	PaleTurquoise	AF EE EE	0xAFEEEE	175	238	238
102	74	PaleVioletRed	DB 70 93	0xDB7093	219	112	147
103	116	PapayaWhip	FF EF D5	0xFFEFD5	255	239	213
104	108	PeachPuff	FF DA B9	0xFFDAB9	255	218	185
105	55	Peru	CD 85 3F	0xCD853F	205	133	63
106	109	Pink	FF C0 CB	0xFFC0CB	255	192	203
9	89	Plum	DD A0 DD	0xDDA0DD	221	160	221
107	99	PowderBlue	B0 E0 E6	0xB0E0E6	176	224	230
108	8	Purple	80 00 80	0x800080	128	0	128
3	52	Red	FF 00 00	0xFF0000	255	0	0
109	71	RosyBrown	BC 8F 8F	0xBC8F8F	188	143	143
110	62	RoyalBlue	41 69 E1	0x4169E1	65	105	225
111	14	SaddleBrown	8B 45 13	0x8B4513	139	69	19
112	84	Salmon	FA 80 72	0xFA8072	250	128	114
113	78	SandyBrown	F4 A4 60	0xF4A460	244	164	96
114	17	SeaGreen	2E 8B 57	0x2E8B57	46	139	87
115	125	Seashell	FF E0 E0	0xFFE0E0	255	245	245

David

Attached Image (click to enlarge)



Sep 18, 2008 9:09am

[Quote](#)[Cleanup](#)[Post 9](#)

Hi David,

Hope you can help. I am looking to get weekly vertical lines on my chart to look at the weekly pattern and cycles. Have you got any suggestion, sorry for the basic nature of the request. I have searched for an iddicator, and have not found one. Many thanks for your assistance.

2be

Sep 27, 2008 10:32am

[Quote](#)[Cleanup](#)[Post 10](#)[Quoting 2be](#)

Hi David,

Hope you can help. I am looking to get weekly vertical lines on my chart to look at the weekly pattern and cycles. Have you got any suggestion, sorry for the basic nature of the request. I have searched for an iddicator, and have not found one.

Many thanks for your assistance.

2be

2be, sorry for the belated reply, I just noticed your post now.

Press Ctrl-Y on an **H4** chart to toggle vertical weekly lines on/off. To get weekly lines on other timeframe charts, you would need to write a script or indicator.

On H1 charts and below, Ctrl-Y plots a vertical line at the start of each day.

On H4 charts, Ctrl-Y plots a vertical line at the start of each week.

On D1 charts, Ctrl-Y plots a vertical line at the start of each month.

On W1 and MN charts, Ctrl-Y plots a vertical line at the start of each year.

Best wishes,
David

Oct 30, 2008 9:06am

[Quote](#)

[Cleanup](#)

[Post 11](#)

[Broker Specs](#)

Hanover

It's a wonderful guide.

I want to know whether there is any way (including using outside software like Doodle) to insert small text boxes on the chart to explain strategy.

Text label : what is the maximum letters of word can it have?

thanks again for sharing your tips.

[Quoting hanover](#)

2be, sorry for the belated reply, I just noticed your post now.

Press Ctrl-Y on an **H4** chart to toggle vertical weekly lines on/off. To get weekly lines on other timeframe charts, you would need to write a script or indicator.

On H1 charts and below, Ctrl-Y plots a vertical line at the start of each day.

On H4 charts, Ctrl-Y plots a vertical line at the start of each week.

On D1 charts, Ctrl-Y plots a vertical line at the start of each month.

On W1 and MN charts, Ctrl-Y plots a vertical line at the start of each year.

Best wishes,
David

Oct 30, 2008 4:38pm

[Quote](#)

[Cleanup](#)

[Post 12](#)

[Quoting pj9100](#)

Hanover

It's a wonderful guide.

I want to know whether there is any way (including using outside software like Doodle) to insert small text boxes on the chart to explain strategy.

Text label : what is the maximum letters of word can it have?

thanks again for sharing your tips.

PJ, apart from the "Insert -> Text" and "Insert -> Text Label" facilities there's nothing that I know of that's available within MT4. However, these allow one line of text only, so you'd need to place several of them to get a 'paragraph' effect. Text Label seems to be able to accept any number of characters, but I can't get it to display more than the first 62 of them.

I've never used Doodle.

To do my annotations, I use a screen grabber to cut a section from the MT4 chart, then I paste it in Excel. Then I use the latter's drawing tools to put text, boxes, arrows, etc on the image. Then I use the screen grabber to cut and paste the resulting image into Microsoft Paint, which I save as a GIF, and then upload as an attachment to my FF post.

If you're happy to post an entire chart, you don't need a screen grabber. You can use MT4's "File -> Save as Picture" option, then load the saved file into Excel ("Insert -> Picture -> From File...."). Then add the annotations, and use shift-click to select them all, then copy and paste into Microsoft Paint.

No doubt there's a much less cumbersome way, but that's how I do it.

David

Nov 23, 2008 2:07am

[Quote](#)

[Cleanup](#)

[Post 13](#)

hi david,

thanks 😊

When life gives you lemons, make lemonade

[Broker Specs](#)

Dec 29, 2008 6:58pm

[Quote](#)

[Cleanup](#)

[Post 14](#)

If you want to extend a trendline without changing it's angle, select it, then while holding the SHIFT key, drag one end of it, this also works for moving Fibs sideways..... and a few other objects. Try it :-)

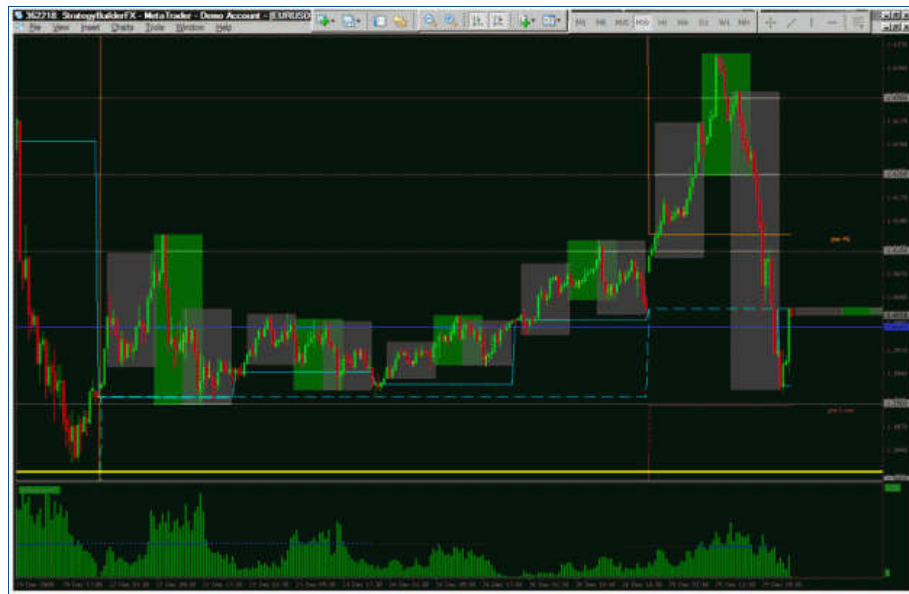
Also if you want to create a completely horizontal trendline, select the trendline, hold the SHIFT key and pull one end of the trendline back towards the other end of the trendline and then out the other side, Magic..... ha ha. It works on other objects too, like some channels.

If you are like me and hate wasting chart space with tool bars, I float all the tool bars up into the title bar area. Like pic below. I also Unselect the View - Status Bar and Charts Bar, but that probably does not suit many people.

Lastly if you have a Programmable Tilt wheel on your mouse, Tilt is the middle scroll wheel that also rocks left and right, then you can program them with CTRL-TAB and CTRL-SHIFT-TAB and that allows you to jump from one chart tab to another, it also works for tabs in Firefox and IEExplorer, and it is my most loved add on.

Dean.

Attached Image (click to enlarge)



perception is reality

Feb 15, 2009 9:30am

[Quote](#)

[Cleanup](#)

[Post 15](#)

[Quoting hanover](#)

PJ, apart from the "Insert -> Text" and "Insert -> Text Label" facilities there's nothing that I know of that's available within MT4. However, these allow one line of text only, so you'd need to place several of them to get a 'paragraph' effect. Text Label seems to be able to accept any number of characters, but I can't get it to display more than the first 62 of them.

I've never used Doodle.

To do my annotations, I use a screen grabber to cut a section from the MT4 chart, then I paste it in Excel. Then I use the latter's drawing tools to...

David,

Thank you. I just came across an excellent text insert indicator which can insert multiple lines .

Tro_MyNotes

Attached File

 [TRO_MyNotes.mq4](#) 6 KB | 2,643 downloads[Broker Specs](#)Feb 15, 2009 1:41pm [Quote](#) [Cleanup](#) [Post 16](#)

Great TRO indie on the text inserter. Really helps to make explanations.

Cheers

Feb 16, 2009 11:28pm [Quote](#) [Cleanup](#) [Post 17](#)

This is such a useful post is it possible to make this a sticky

Mar 5, 2009 8:52am [Quote](#) [Cleanup](#) [Post 18](#)[Quoting fugly](#)

This is such a useful post is it possible to make this a sticky

Thanks Twee

Mar 9, 2009 5:24pm [Quote](#) [Cleanup](#) [Post 19](#)

Is it possible to re-display (earlier) MT4 Alert Pop-Ups after you have pressed the 'OK' button to acknowledge (and remove) the Pop-Up when it was first displayed?

Thank you, in anticipation.

Mar 11, 2009 11:10am [Quote](#) [Cleanup](#) [Post 20](#)[Quoting Dm3554](#)

Is it possible to re-display (earlier) MT4 Alert Pop-Ups after you have pressed the 'OK' button to acknowledge (and remove) the Pop-Up when it was first displayed?

Thank you, in anticipation.

MT4 maintains Alerts in a queue in reverse chronological sequence, i.e. the most recent one at the top of the queue. You can view the others by resizing (expanding) the window. Once you have clicked OK, the only way to recall the queue/window is to send another alert. For example, you could create a script with the one statement:

`Alert("Dummy alert to display queue");`

and drag it onto the chart from the Navigator.

The only way that I know of clearing the queue (removing alerts) is to exit and restart MT4.

At least that's to the best of my knowledge, somebody please post a correction if I'm wrong.

2 members viewing: [Invisible](#) , [jjibl](#)

[More](#)

Similar Threads

[How can you improve your trading techniques?](#)

15 replies

[Maanawi Trading techniques](#)

6 replies

[Here we post our favorite MM techniques](#)

2 replies

[Broker Specs](#)

LOWER YOUR TRADING COST

EUR/GBP

1.2

USD/JPY

1.5

LEARN MORE

NOV 2015

FOREX LEVERAGED TRADING INVOLVES SIGNIFICANT RISK OF LOSS

Website

[Homepage](#)

[Search](#)

[Members](#)

[User Guide](#)

[Report a Bug](#)

Products

[Forums](#)

[Trades](#)

[Calendar](#)

[News](#)

[Market](#)

[Brokers](#)

[Trade Explorer](#)

Company

[About FF](#)

[FF Blog](#)

[Careers at FF](#)

[Media Kit](#)

[Contact FF](#)

Connect

Forex Factory, Inc. / [Terms of Service](#)

Forex Factory® is a registered trademark.